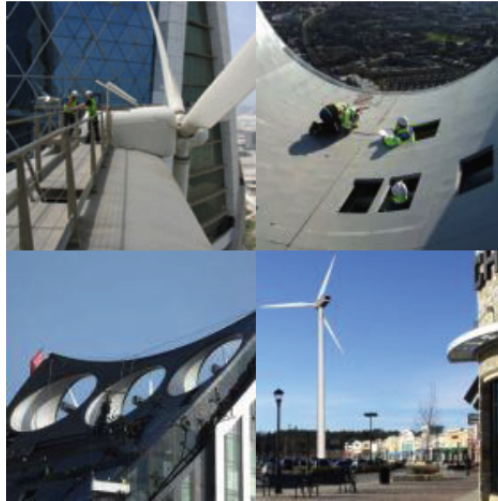


Strata Building



Architectural integrated Wind Turbines

Locale	South London United Kingdom
Status	Operational
Owner(s)	R/E Investor

Power station information

Primary fuel	Wind
---------------------	------

Power generation information

Installed Capacity	57 kilowatts
---------------------------	--------------

As Board of Director for Norwin A/S, MIDC's D. Murphy had oversight for the Strata Building, aka the Razor at Elephant and Castle in Southwark, London. Strata is a 148-metre, 43 floors, 408 apartment skyscraper - the tallest residential building in London. Strata is the first building in the world to incorporate wind turbines within its structure. The three nine-meter wind turbines will produce 50MWh of electricity per year - sufficient energy to provide power for the common areas of the building.